

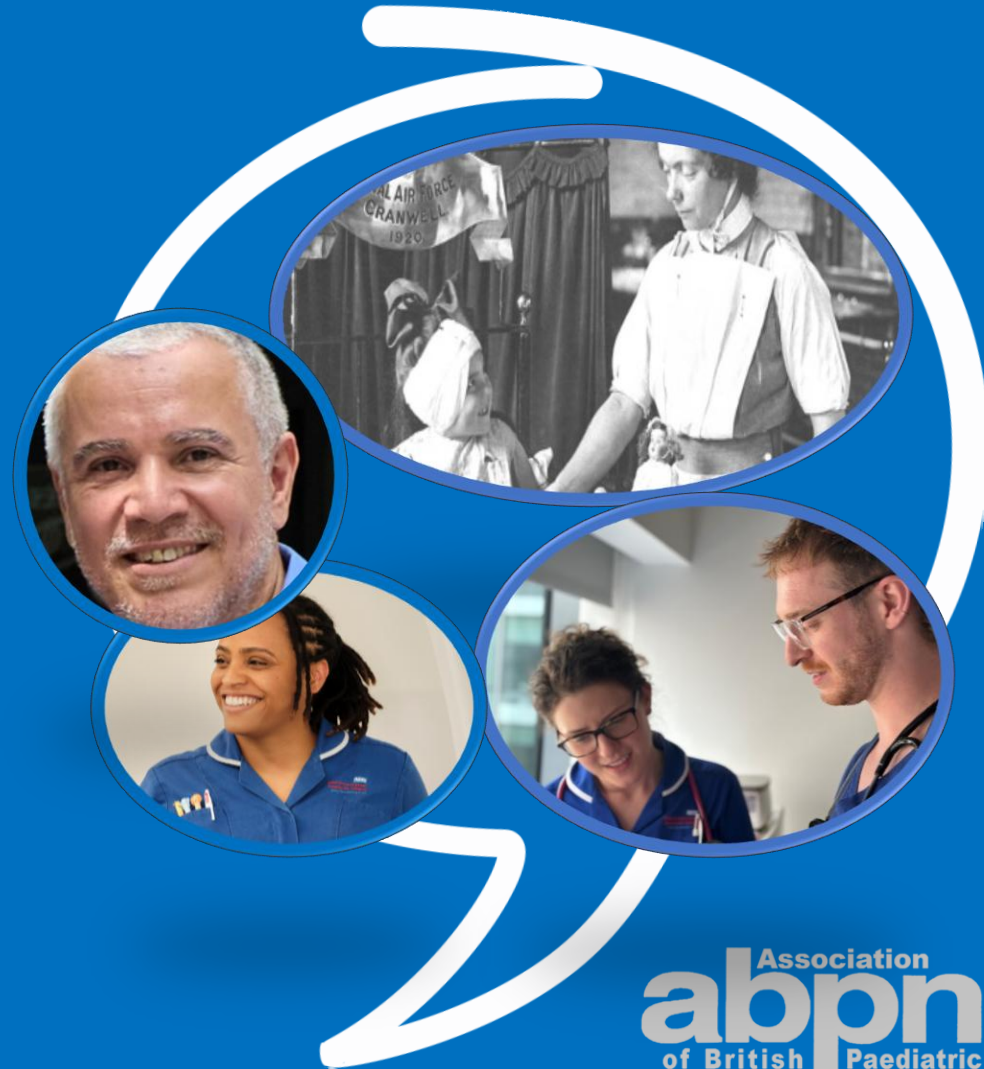
# BCYP Nurse Associates: Through the Lens of the Hospital Setting

Fiona Lynch  
Assistant Chief Nurse  
GOSH  
Feb 2026  
[Fiona.lynch@gosh.nhs.uk](mailto:Fiona.lynch@gosh.nhs.uk)



# Overview of GOSH

- Opened in 1852 and was the first children's hospital in UK.
- 400 in-patient beds.
- 267,471 outpatient attendances.
- 6,000 staff
- 1700 Nurses
- 14 Nurse Associates



# GOSH Nurse Associates

- Work in a variety of settings:
  - Research
  - Out-patient department
  - Respiratory
  - Plastic Surgery
  - International and Private Patients



# Scope of the GOSH Nurse Associates

## Highly valued team members

### Patient Monitoring and Assessment

Nursing Associates conduct vital signs monitoring and clinical assessments to ensure accurate patient care.

### Communication with Families

Nursing Associates provide clear and compassionate updates to patients' families throughout care.

### Collaborative Multidisciplinary Work

They assist procedures and work with multidisciplinary teams to achieve the best patient outcomes.

### Professional Accountability

Nursing Associates adhere to standards, maintain documentation, and ensure patient safety at all times



# Reasons for Pursuing the Nursing Associate Pathway

## Career Progression Opportunity

The NA role is a clear pathway for career advancement while gaining valuable experience.

## Earn While Learning

Candidates are motivated by the ability to earn an income while developing new healthcare skills.

## Inspired by Paediatric Care

Experience in paediatrics inspires a deeper interest in nursing through unique challenges and rewards.

## Greater Responsibility in Care

The NA role offers increased responsibility and involvement in clinical decision-making.

*“My paediatric placement ignited a great passion to excel in children’s nursing.”*

*“Opportunities to provide personal-centred care”*

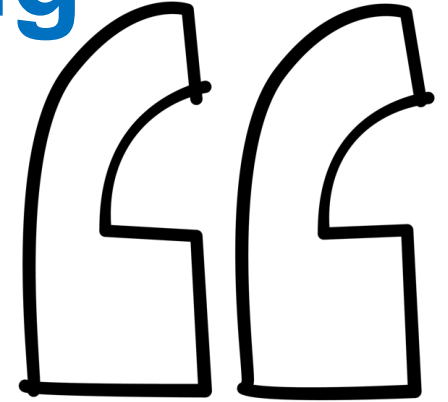
*“Career progression”*



# Most Rewarding Aspects of Being a Nursing Associate

## **Continuity of Patient Care**

build meaningful relationships with patients and families, fostering trust through continuous care.

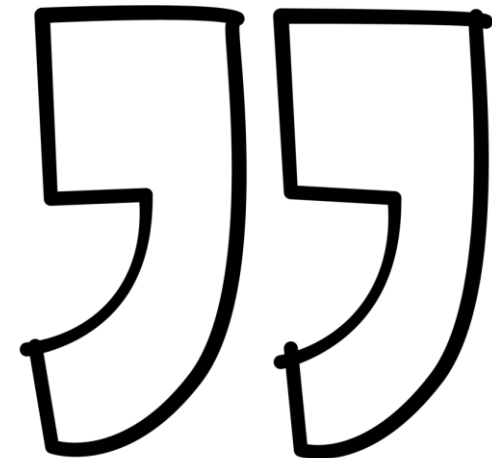


## **Clinical Judgement Development**

develop clinical judgement by assessing situations and making informed decisions impacting patient outcomes.

## **Belonging and Recognition**

feel valued as part of the core nursing workforce, enhancing job satisfaction and motivation.



## **Professional Growth Opportunities**

The role offers ongoing learning, reflective practice, and skill development to adapt to evolving healthcare needs.

# Key Insights & Professional Growth

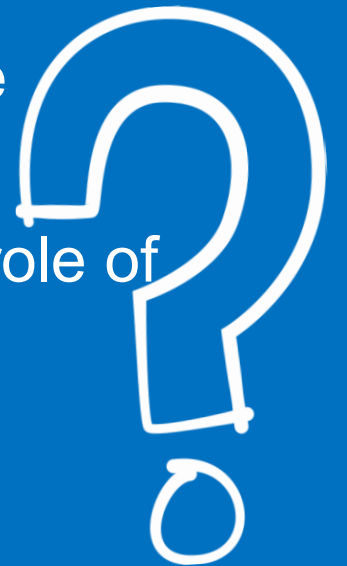
**Scope of Practice and Safety** work within their scope to ensure patient safety and maintain quality care consistently.

**Effective Communication** skills empower Nursing Associates to confidently interact with patients, families, and colleagues.

**Recognition of Patient Deterioration** Vigilance in identifying early signs of patient decline is critical to prevent adverse outcomes.

**Documentation and Accountability** Accurate record-keeping and adherence to regulations ensure accountability and quality healthcare delivery.

**Value and Recognition of Role** Recognise role that complements role of RN- diversifying workforce.



# Strategies for Enhancing the Nursing Associate Pathway

## **Paediatric Scope of Practice**

Defining a clear paediatric scope equips Nursing Associates with essential skills for child healthcare.

## **Structured Career Progression**

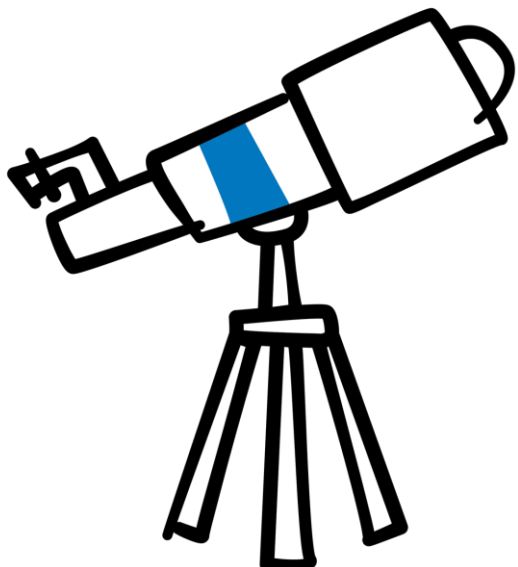
Introducing structured pathways provides Nursing Associates opportunities for career advancement and growth. Including access to training – Critical care course.

## **Protected Learning Time**

Allocating protected time enables Nursing Associates to engage in training and reflective practice effectively.

## **Utilisation in Specialist Services**

Better deployment of Nursing Associates in specialist areas enhances multidisciplinary team contributions.



# Final Words

**“I would like to see GOSH develop the Nursing Associate role as a respected, clearly defined, and well-supported part of the paediatric nursing workforce—one that enables safe care, professional growth, and long-term retention within the Trust.”**



# Summary

- Nurse Associates are a valued member of the MDT.
- These roles contribute to the delivery of safe and quality care.
- Ongoing workforce development requires support, strategy and investment.



# Thank you to all GOSH

(current and previous)

## Nurse Associates!

